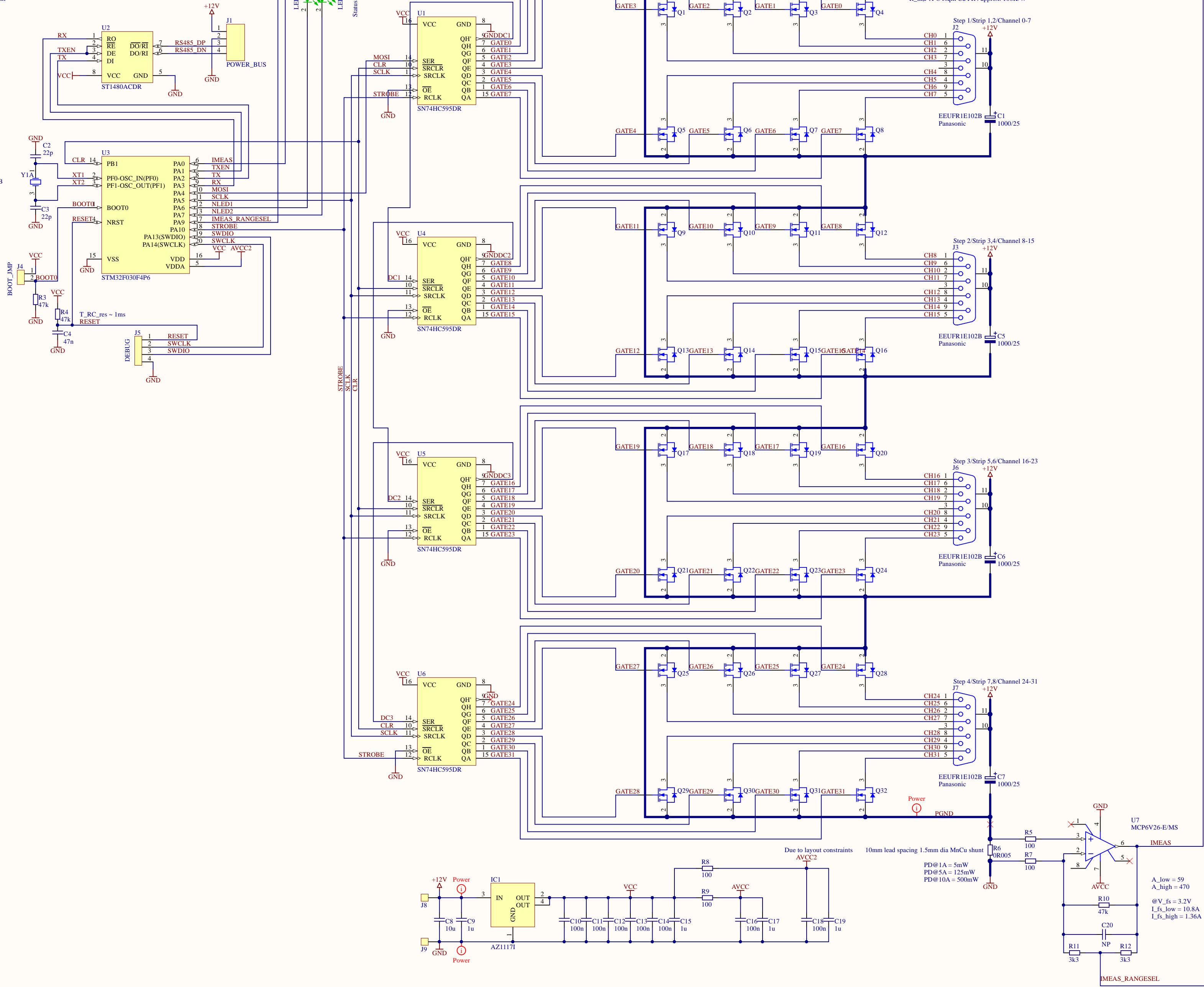
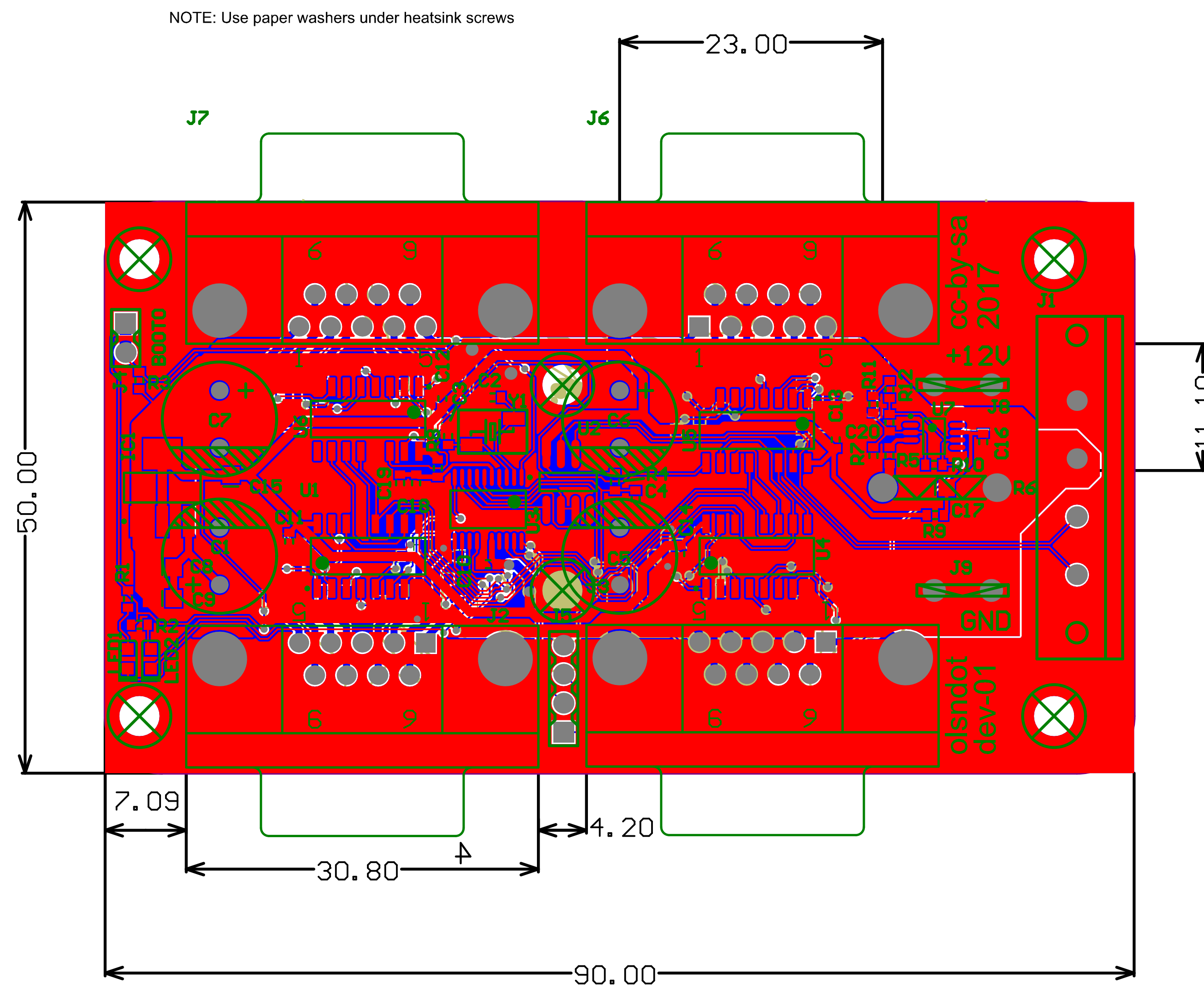


TODO: Check Op-Amp pinout and specs
TODO: Connect op-amp enable
TODO: Verify RS485 tx pinout
TODO: Check main conn footprint

ABM3B-8.000MHZ-B2-T
Take care of different package scales





ENGINEER:	TITLE: <h1>Olsndot LED Driver</h1> Development version		
PCB DESIGNER:			
DATE: 5/16/2017	PART NO.:	REV:	dev-01
FILE NAME: led_drv.PcbDoc	DWG NO:	SCALE:	

