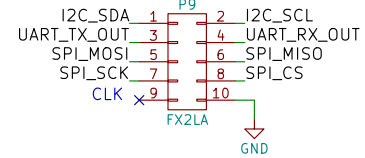
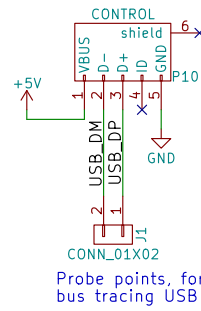


Designed for a cheap FX2LA to be just "plugged in" for sigrok



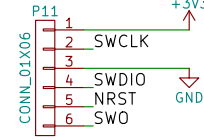
NOTE: this can be freely routed to do whatever's possible!
Potentially:
Jumpers to select what you're connecting here?
(but non-ideal)

ONLY GROUND BETWEEN BOARDS by default!
Intended for both to have their own USB
Option for debug only, with power FROM target



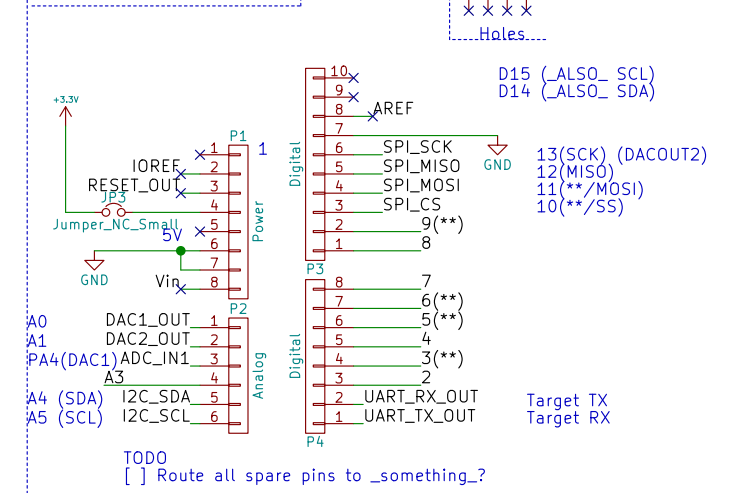
Probe points, for bus tracing USB

STLink compatible debug

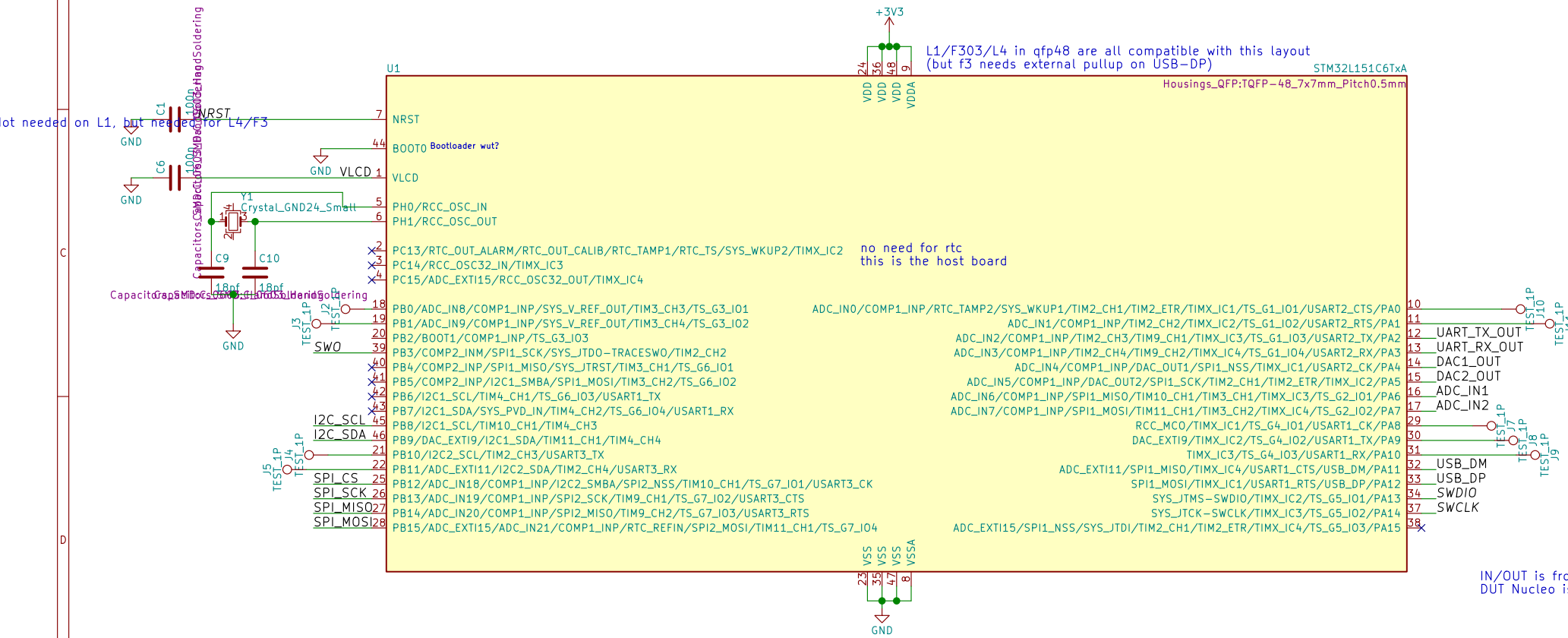


[x] debug via via 6pin
[] debug via 10x5x1.27mm cortex SMD

Arduino UN0r3 pins
As used on Nucleo64 boards

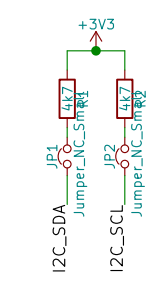
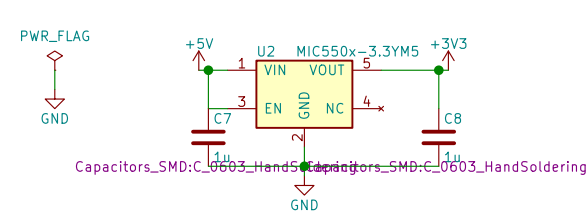
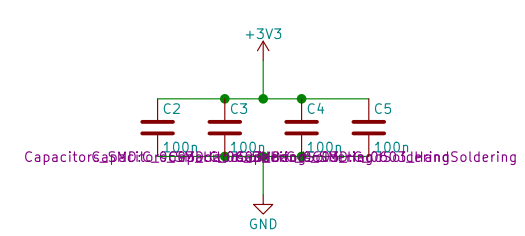


TODO
[] Route all spare pins to _something_?



L1/F303/L4 in qfp48 are all compatible with this layout
(but f3 needs external pullup on USB-DP)

IN/OUT is from the perspective of HOST
DUT Nucleo is TARGET



libopencm3		
Sheet: /		
File: hw1.sch		
Title: test host		
Size: A3	Date: Autumn 2017	Rev:
KiCad E.D.A. kicad 4.0.6	Id: 1/1	