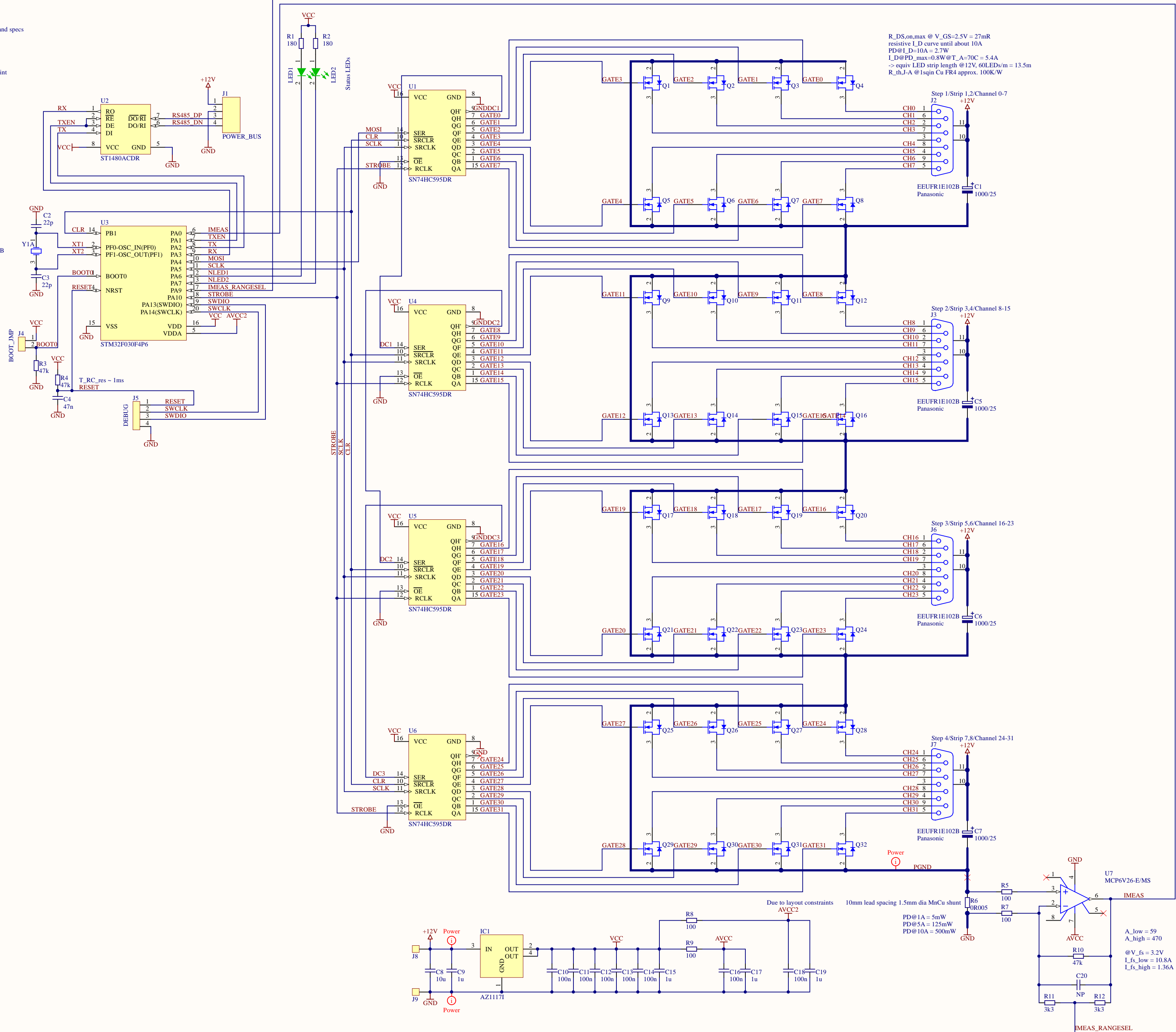


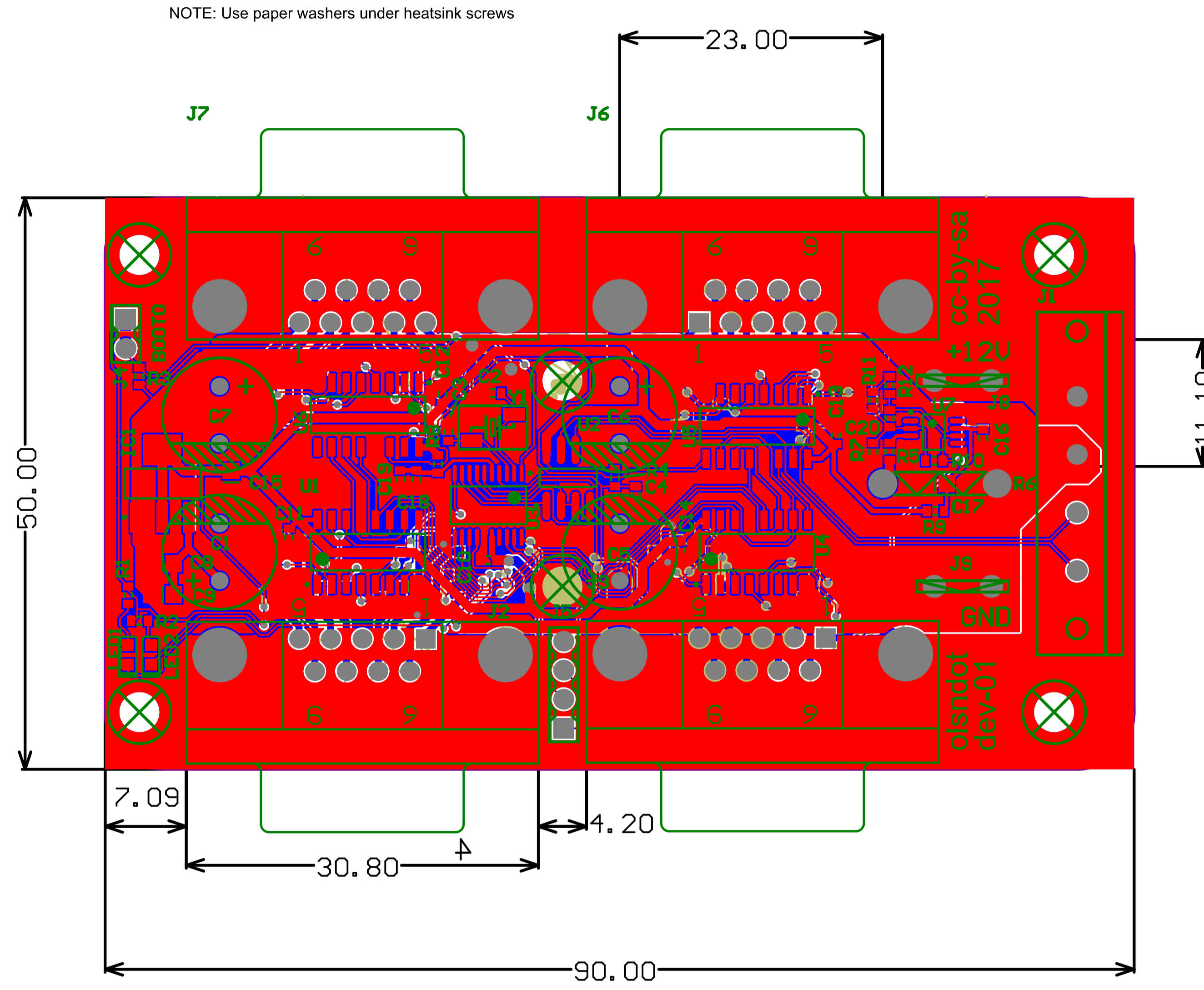
TODO: Check Op-Amp pinout and specs
 TODO: Connect op-amp enable
 TODO: Verify RS485 tx pinout
 TODO: Check main conn footprint

ABMBE-8.000MHZ-B2-T
 Take care of different package scales

$R_{DS(on,max)} @ V_{GS}=2.5V = 27m\Omega$
 $resistive_{L_D} \text{ curve until about } 10A$
 $PD @ L_D=10A = 2.7W$
 $L_D @ PD_{max}=0.8W @ T_A=70C = 5.4A$
 $\rightarrow \text{equiv LED strip length @ } 12V, 60LEDs/m = 13.5m$
 $R_{th,J-A} @ I_{sqin} Cu FR4 \text{ approx. } 100K/W$



Title		
oledot LED driver		
development version		
Size	Number	Revision
A2		.revision
Date:	5/16/2017	Sheet of
File:	C:\Users\...main.SchDoc	Drawn By:



	ENGINEER:	TITLE: Olsndot LED Driver Development version	
	PCB DESIGNER:		
	DATE: 5/16/2017	PART NO.:	REV: dev-01
	FILE NAME: led_drv.PcbDoc	DWG NO.:	SCALE:

